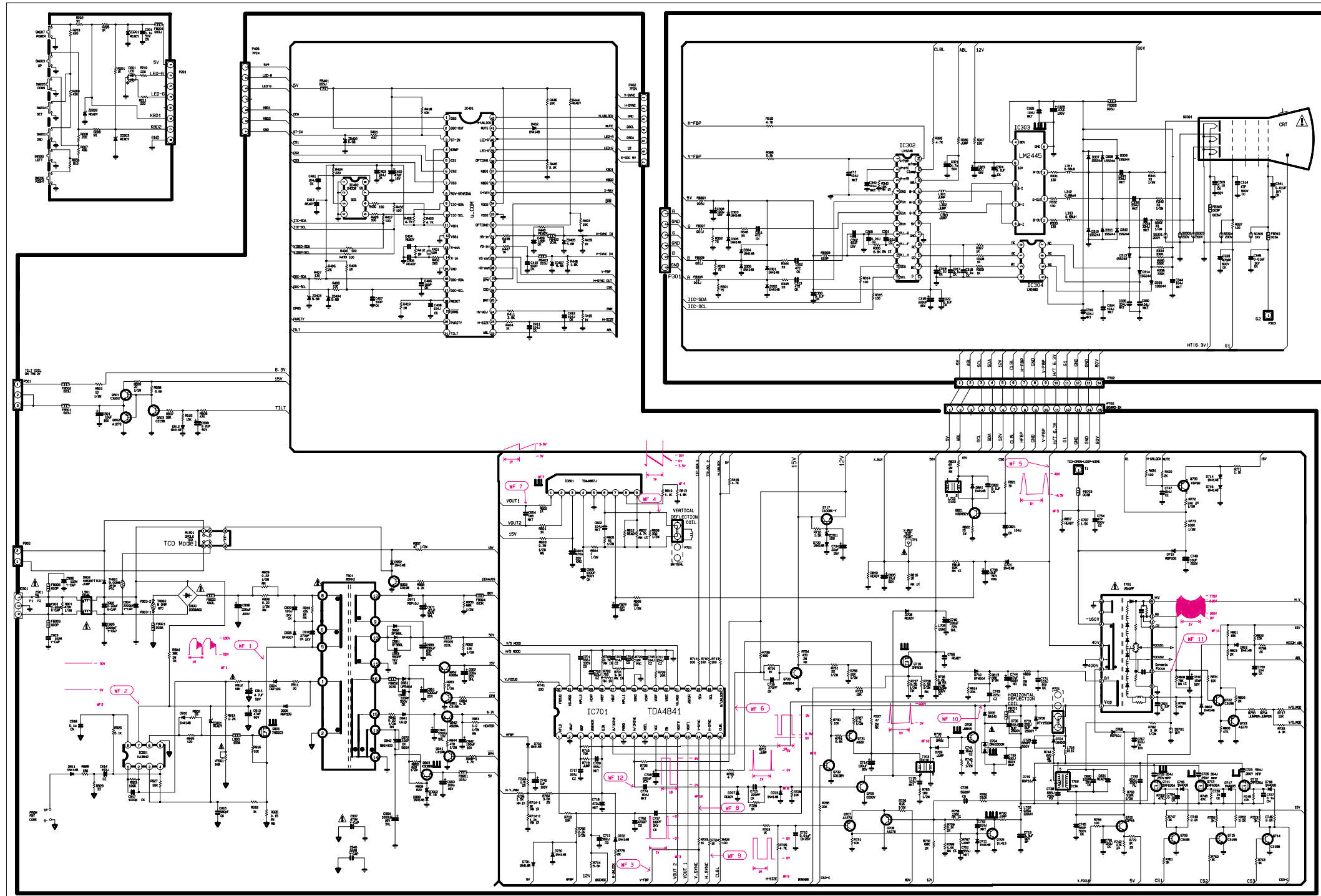


SCHEMATIC DIAGRAM



WAVE FORM CONDITION 1: 110V
2: 60KHz / 75Hz

THE SYMBOL MARK OF THIS SCHEMATIC DIAGRAM INCORPORATES SPECIAL FEATURES IMPORTANT FOR PROTECTION FROM X-RADIATION, FILARE AND ELECTRICAL SHOCK HAZARDS. WHEN SERVICING IT IS ESSENTIAL THAT ONLY MANUFACTURER SPECIFIED PARTS BE USED FOR THE CRITICAL COMPONENTS IN THE SYMBOL MARK OF THE SCHEMATIC.
COMPANY CONFIDENTIAL DO NOT COPY!
DATE 2003-02-20 14:00 REV 01
MODEL T710PHJ-85K Sheet 1/1 Page

NOTICE
Since this is a basic schematic diagram.
The value of components and some partial connection are
subject to be changed for improvement without notice.